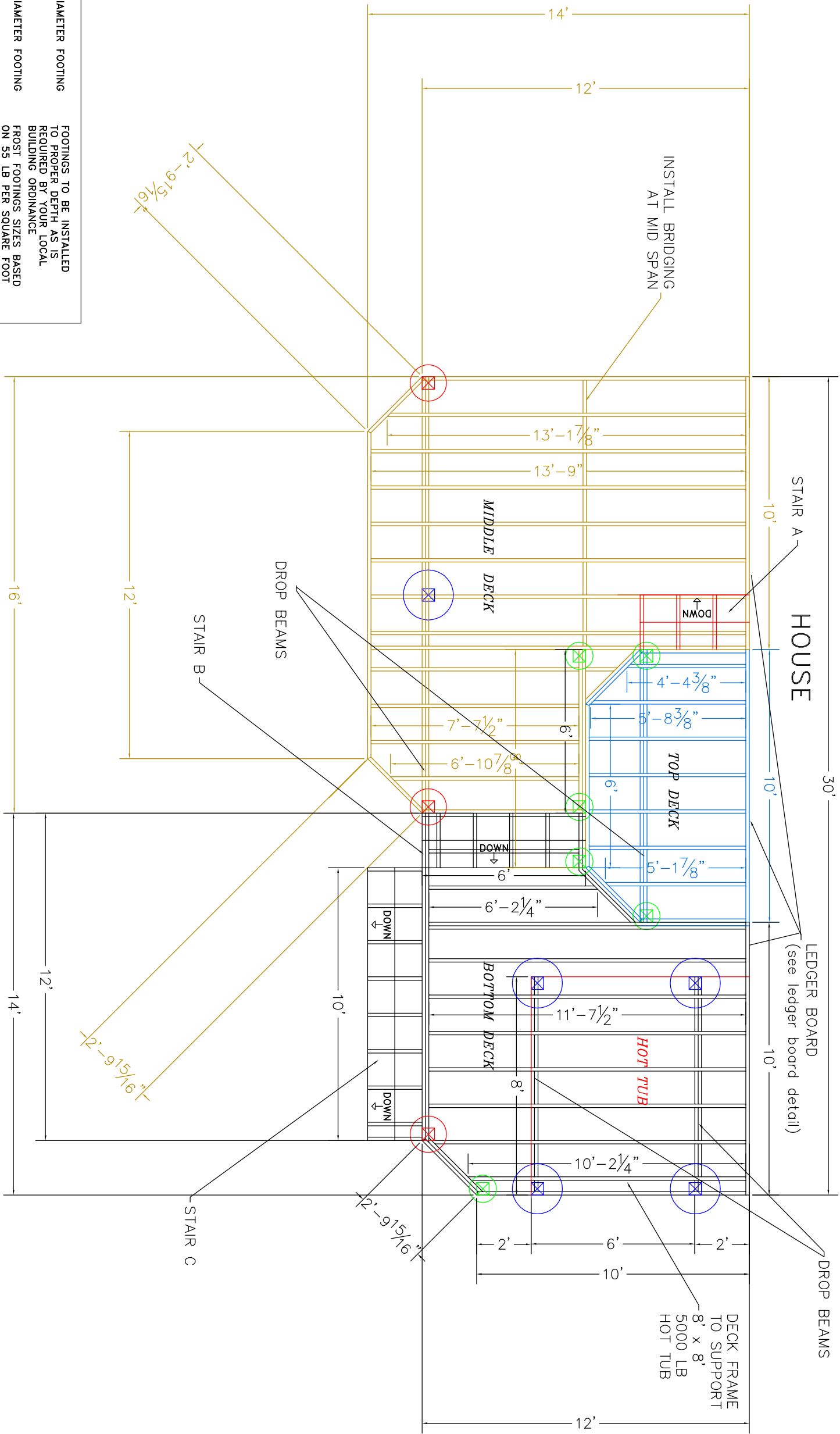


FOR MORE DECK CONSTRUCTION RELATED
REFERENCE INFORMATION VISIT WWW.DECKS.COM/DECKBUILDING
OR POST SPECIFIC QUESTIONS ON THE ONLINE FORUMS



- ⊗ 12" DIAMETER FOOTING
FOOTINGS TO BE INSTALLED TO PROPER DEPTH AS IS REQUIRED BY YOUR LOCAL BUILDING ORDINANCE
- ⊗ 16" DIAMETER FOOTING
FOOTING SIZES BASED ON 55 LB PER SQUARE FOOT TRIBUTARY LOADS APPLIED TO 1500 PSI SOIL COMPRESSION CAPACITY (ASSUMED WORST CASE) SEE FOOTING DETAIL
- ⊗ 22" DIAMETER FOOTING
SEE FOOTING DETAIL

DISCLAIMER: THERE ARE MANY ALTERNATIVE METHODS COMMONLY USED FOR DECK CONSTRUCTION. OUR PLANS REPRESENT OUR RECOMMENDED TECHNIQUES, HOWEVER IF YOU CHOOSE TO DEVIATE FROM OR MODIFY THESE METHODS YOU SHOULD CONSULT A PROFESSIONAL BUILDING INSPECTOR, ARCHITECT, OR STRUCTURAL ENGINEER TO ENSURE THERE WILL NOT BE ANY NEGATIVE CONSEQUENCES WHEN USED IN COMBINATION WITH THE PLANS AND DETAILS PROVIDED.

DISCLAIMER: ONLY USE #2 OR BETTER PRESSURE TREATED SOUTHERN YELLOW PINE 2 x 10 FOR FRAMING MATERIALS NEVER SUBSTITUTE COMPOSITE OR SOFTWOODS FOR FRAMING MATERIALS

DISCLAIMER: ALL DECK PLANS MUST BE VERIFIED TO ENSURE ACCURACY, COMPLIANCE WITH ALL APPLICABLE STATUTES AND REGULATION AND FITNESS FOR PURPOSES PRIOR TO CONSTRUCTION.



LEDGER BOARD TO BE FLASHED AND LAG BOLTED (2) 1/2" LAG BOLTS WITH WASHERS 16" O.C. (see ledger detail)
 JOISTS TO BE 2x10 SYP TREATED
 BEAMS TO BE 2-2x10 SYP TREATED NAILED
 RAILS TO BE 36" HIGH WITH LESS THAN 4" OPENINGS PER IRC CODE (see rail detail)
 STAIRS TO BE BUILT MAX RISE 8" MIN RISE 4" MIN RUN 9" PER IRC CODE (see stair detail)

DECKING TO BE _____
 ALL JOIST HANGERS TO BE CORROSION RESISTANT AND INSTALLED PER MANUFACTURERS INSTRUCTIONS

2

PLAN VIEW
DECK PLAN 3LS044

© DECKS.COM LLC