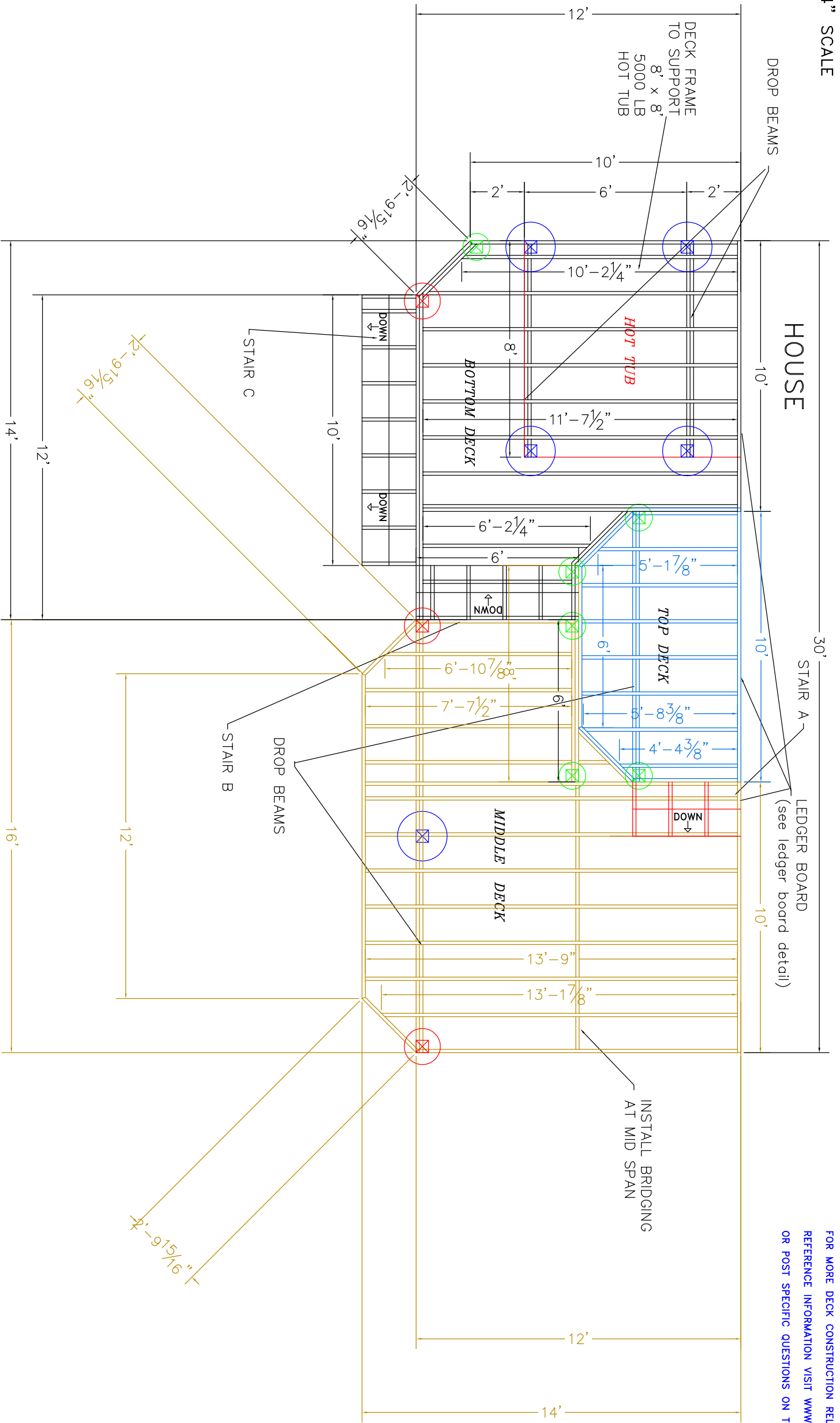





1/4" SCALE



-  12" DIAMETER FOOTING  
FOOTINGS TO BE INSTALLED TO PROPER DEPTH AS IS REQUIRED BY YOUR LOCAL BUILDING ORDINANCE
-  16" DIAMETER FOOTING  
FROST FOOTINGS SIZES BASED ON 35 LB PER SQUARE FOOT TRIBUTARY LOADS APPLIED TO 1500 PSI SOIL COMPRESSION CAPACITY (ASSUMED WORST CASE) SEE FOOTING DETAIL
-  22" DIAMETER FOOTING

DISCLAIMER: THERE ARE MANY ALTERNATIVE METHODS COMMONLY USED FOR DECK CONSTRUCTION. OUR PLANS REPRESENT OUR

RECOMMENDED TECHNIQUES, HOWEVER IF YOU CHOOSE TO DEVIATE FROM OR MODIFY THESE METHODS YOU SHOULD CONSULT A PROFESSIONAL BUILDING INSPECTOR, ARCHITECT, OR STRUCTURAL ENGINEER TO ENSURE THERE WILL NOT BE ANY NEGATIVE CONSEQUENCES WHEN USED IN COMBINATION WITH THE PLANS AND DETAILS PROVIDED.

FOR MORE DECK CONSTRUCTION RELATED REFERENCE INFORMATION VISIT [WWW.DECKS.COM/DECKBUILDING](http://WWW.DECKS.COM/DECKBUILDING) OR POST SPECIFIC QUESTIONS ON THE ONLINE FORUMS

INSTALL BRIDGING AT MID SPAN

DISCLAIMER: ONLY USE #2 OR BETTER PRESSURE TREATED SOUTHERN YELLOW PINE 2 x 10 FOR FRAMING MATERIALS NEVER SUBSTITUTE COMPOSITE OR SOFTWOODS FOR FRAMING MATERIALS

DISCLAIMER: ALL DECK PLANS MUST BE VERIFIED TO ENSURE ACCURACY, COMPLIANCE WITH ALL APPLICABLE STATUTES AND REGULATION AND FITNESS FOR PURPOSES PRIOR TO CONSTRUCTION.

- LEDGER BOARD TO BE FLASHED AND LAG BOLTED (2) 1/2" LAG BOLTS WITH WASHERS 16" O.C. (see ledger detail)
- JOISTS TO BE 2x10 SYP TREATED
- BEAMS TO BE 2-2x10 SYP TREATED NAILED
- RAILS TO BE 36" HIGH WITH LESS THAN 4" OPENINGS PER IRC CODE (see rail detail)
- STAIRS TO BE BUILT MAX RISE 8" MIN RISE 4" MIN RUN 9" PER IRC CODE (see stair detail)
- DECKING TO BE \_\_\_\_\_
- ALL JOIST HANGERS TO BE CORROSION RESISTANT AND INSTALLED PER MANUFACTURERS INSTRUCTIONS

2

PLAN VIEW  
DECK PLAN 3LSR044  
REVERSE

© DECKS.COM LLC



ATTENTION: THIS PLAN IS NOT CONSIDERED VALID UNLESS APPROVED BY YOUR LOCAL BUILDING INSPECTOR, ARCHITECT, OR STRUCTURAL ENGINEER.